

Note:

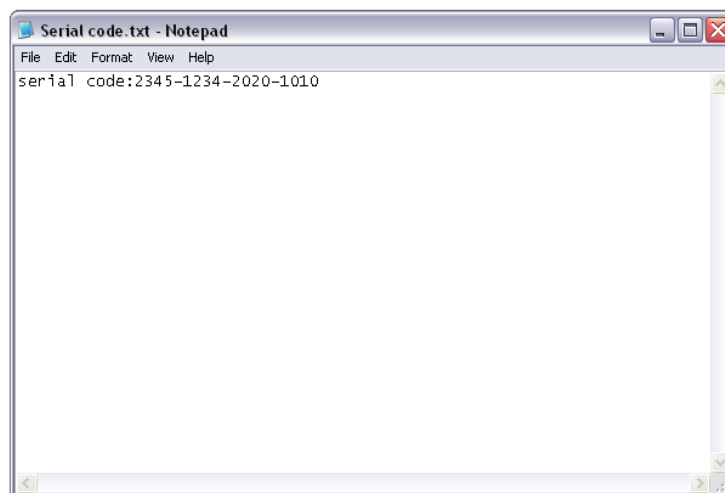
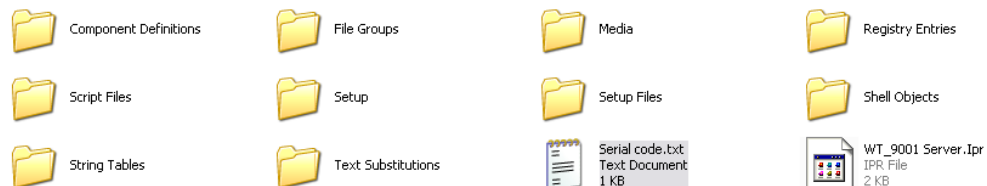
1. Information in this manual is subject to change without notice and does not represent a commitment of manufacturer.
2. Manufacturer shall not be liable for errors contained herein and incidental or consequential damages result from using this manual.
3. No part of the manual can be reproduced or publicized in any form or by any means.
4. All rights are reserved.

Installing The Software

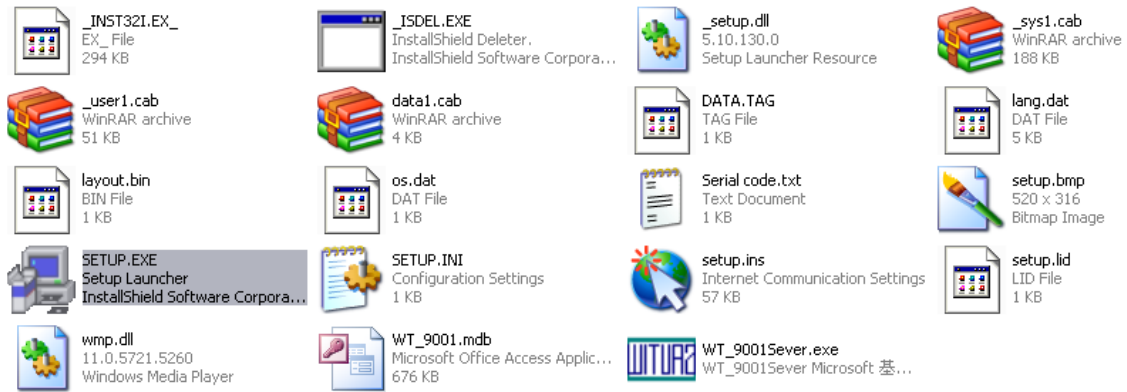
Step 1: Insert the provided WT-9001 CD into your computer. You will find a folder named **“WT-9001 Server Software”**.



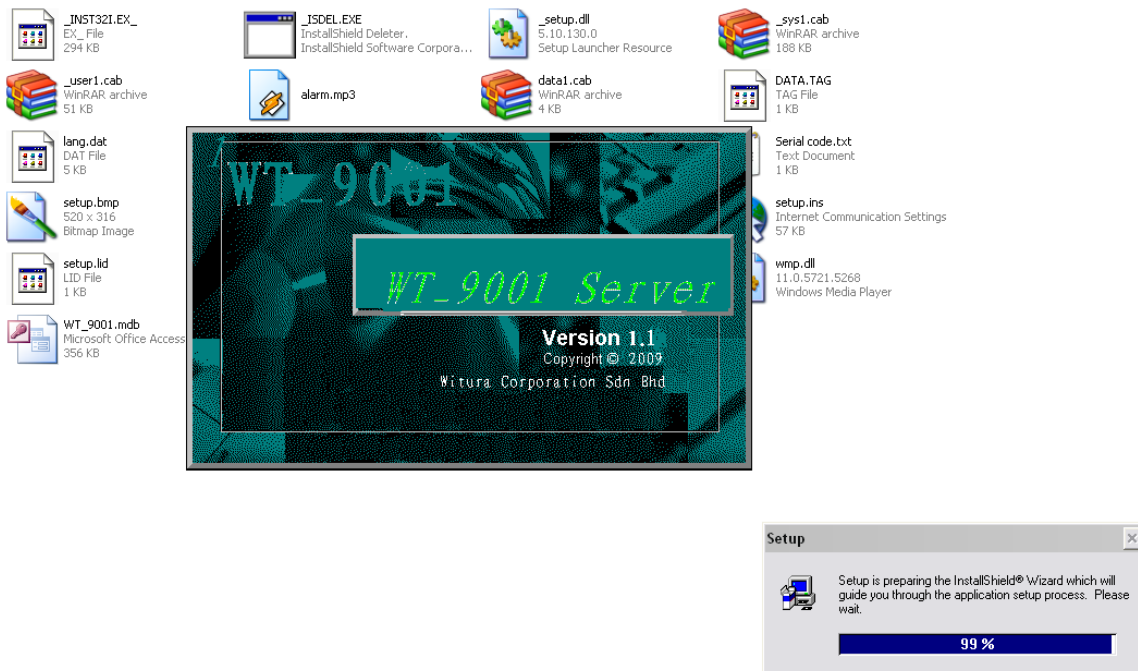
Step 2: Double click on the **“WT-9001 Server Software”** folder and look for **“Serial code.txt”**. Note down the serial code in Serial code.txt.



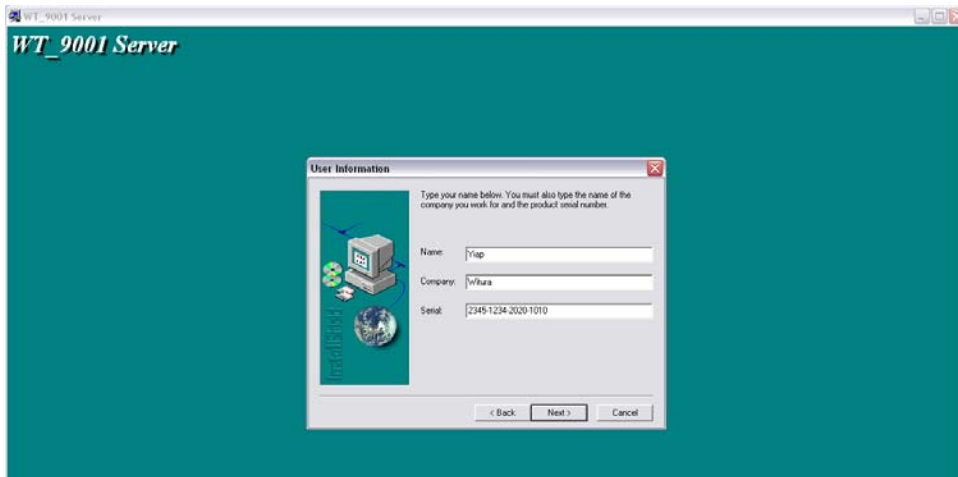
Step 3: Double click on the "Setup" folder and look for "SETUP.EXE"



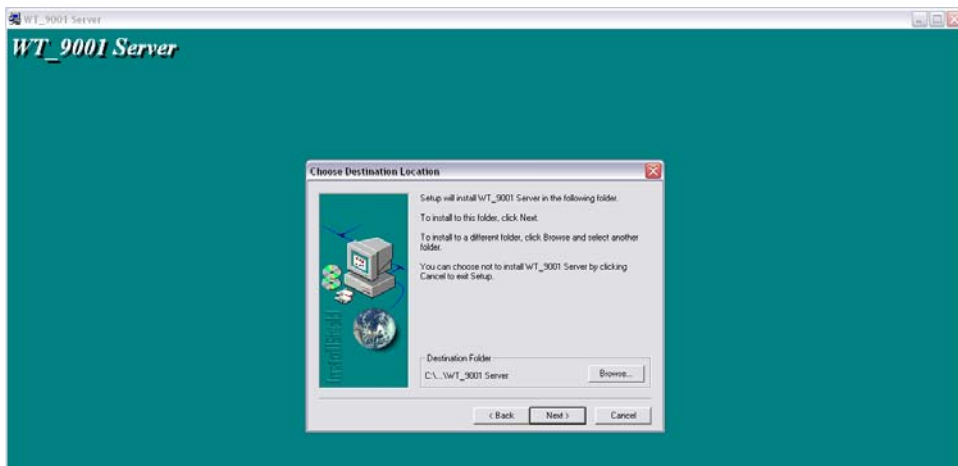
Step 4: Double click on "SETUP.EXE" to begin installation



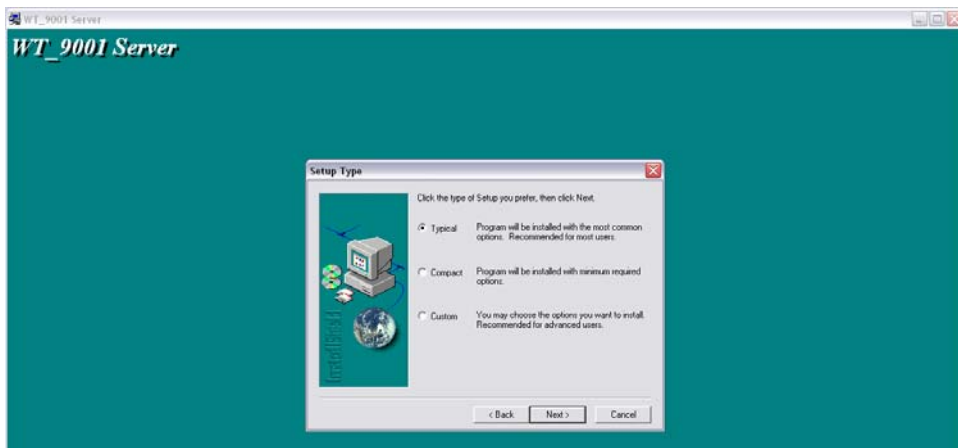
Step 5: Enter your details and the serial code provided. Click next to proceed.



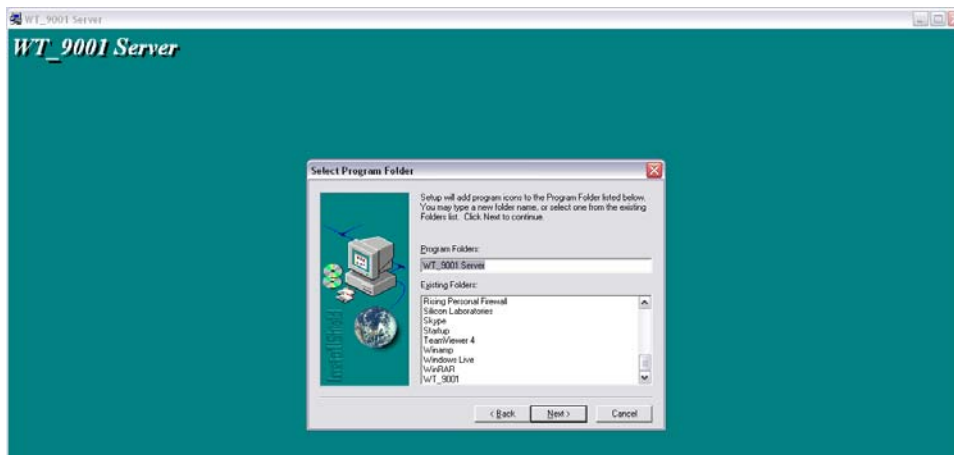
Step 6: Choose your destination folder for installing the software. Click next to proceed.



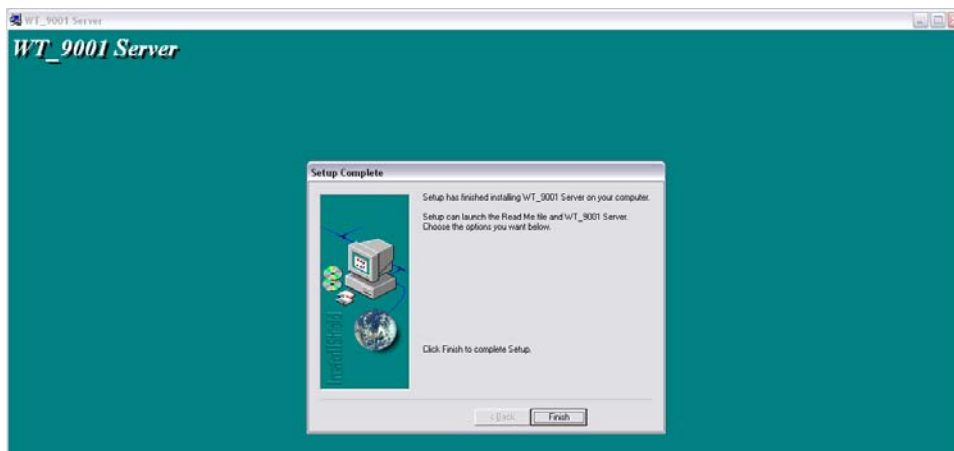
Step 7: Select Typical for this installation. Click next to proceed.



Step 8: Select Program Folder and click next to proceed.

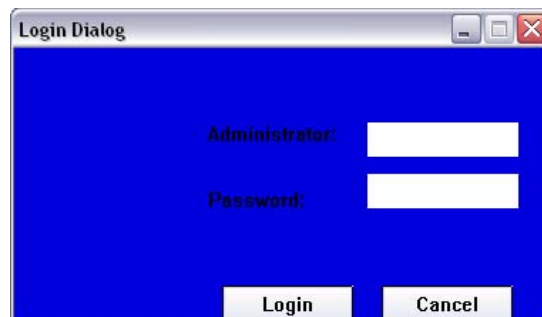


Step 9: Click Finish to complete Setup

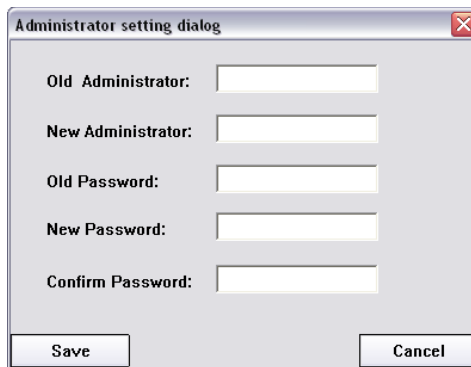


Launch The WT-9001 Server Software Platform

Step 10: Once finished setup, you will find a WT_9001Server1.1 icon on your desktop. Double click on it and launch the software. When WT_9001 Server software is launched for the first time, there is a default Administrator ID "witura" and its default Password is "12345"

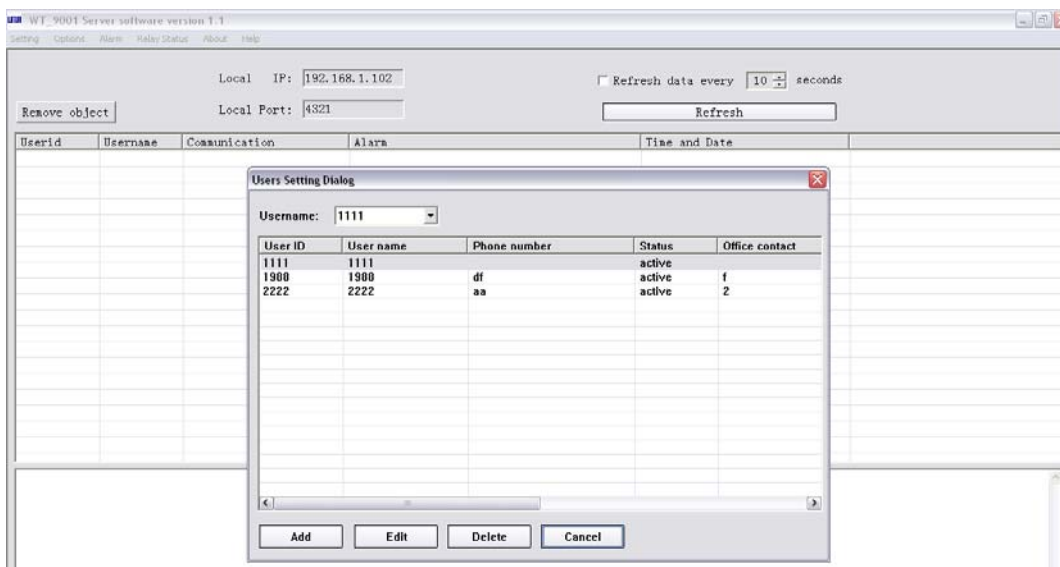


Step 11: Once logged into the system, you can change the Administrator ID and Password from the “Setting > Administrator > Reset Administrator” menu.



Step 12: Adding New Users

For the first step, add the organization user information by selecting “Setting > User”. A smaller window will pop out as shown below.



To add a new user, simply click on “Add” button. The Administrator may enter User ID, User name, phone number (SIM number of WT-9001 device), contacts, status and other details here. Not all the users need to be in active status, i.e. for those inactive user contacts, they will be automatically disabled from the WT-9001 Server software.

The screenshot shows a dialog box titled "Add user dialog". It has a "User information" section with the following fields: "User ID" (text box with "1234"), "Phone number" (text box with "76818189"), "User name" (text box with "Smith"), "Office contact" (text box), "Status" (radio buttons for "Active" and "In-active", with "Active" selected), and "Office address" (text box). Below this is a "Remark" section with a large text area. At the bottom are "Add" and "Cancel" buttons.

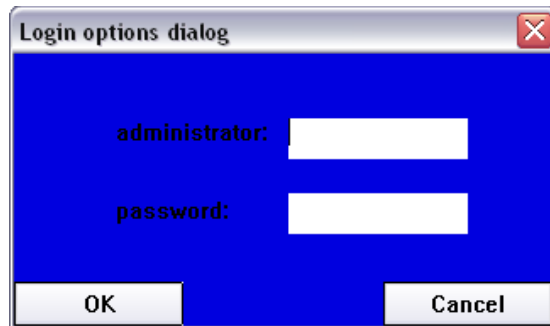
Once the administrator clicks the “Add” button, the user profile will be saved in the system database.

Note: The administrator may program the users as many as his/her HDD free space can support. The administrator may enter 4 digits numeric numbers only for User ID. The User ID must be the same with the User ID in the WT-9001 device.

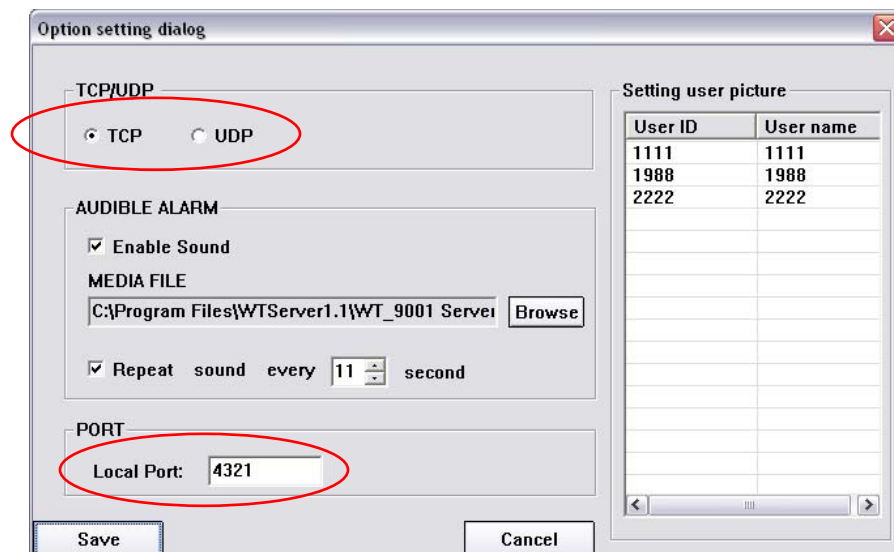
Step 13: Setup the Connection Type and Port

To setup connection type and port, simply press “Options” menu. A smaller window will pop up as shown below.

The screenshot shows the main window of the WT_9001 Server software. The title bar says "WT_9001 Server software version 1.1". The menu bar includes "Setting", "Options", "Alarm", "Relay Status", "About", and "Help". The "Options" menu item is circled in red. Below the menu bar, there are two text boxes: "Local IP: 192.168.1.102" and "Local Port: 4321". To the left of the "Local Port" box is a "Remove object" button. At the bottom, there is a table with the following columns: "Userid", "Username", "Communication", and "Alarm".



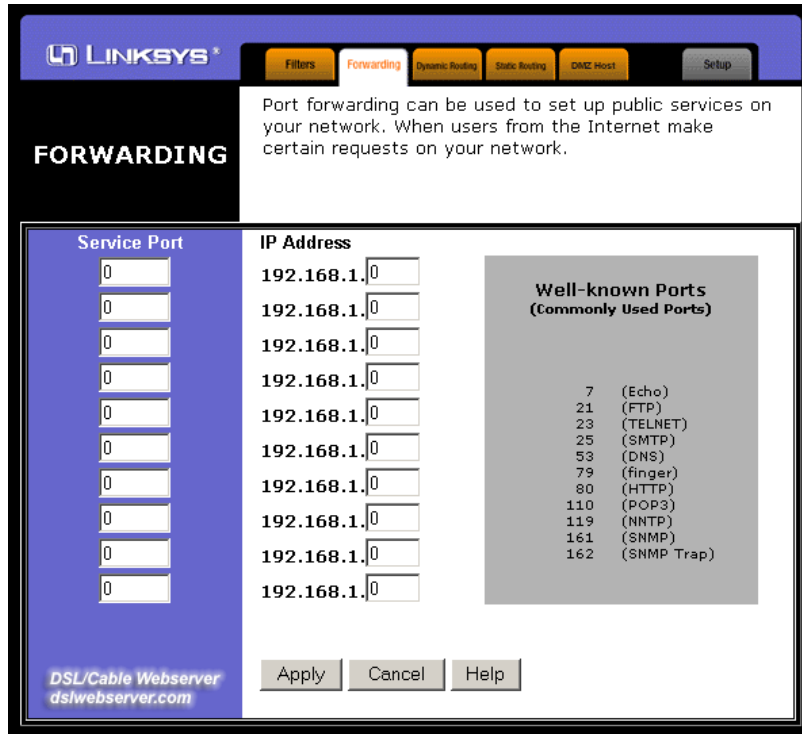
Enter Administrator ID and Password. When WT_9001 Server software is launched for the first time, there is a default Administrator ID “witura” and its default Password is “12345”.



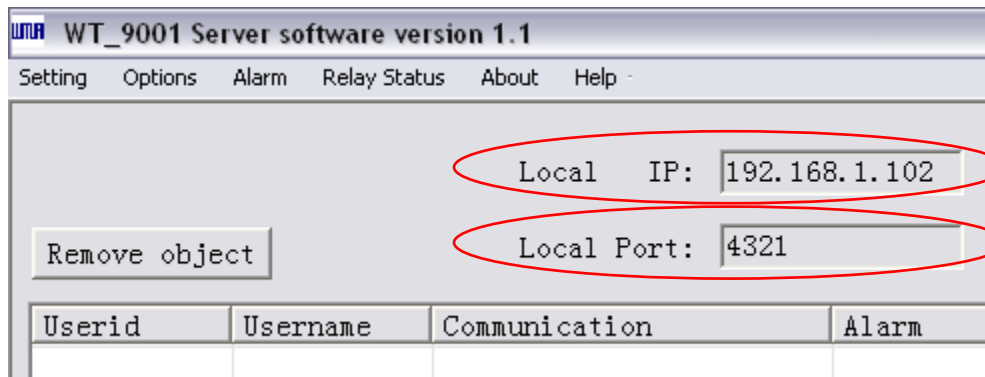
Select the connection type “TCP” or “UDP” and setup port number. Press “Save” button to save settings.

Step 14: Setup port forwarding for your router.

The WT_9001 Server software requires an opened port which allows instant connections and data transfer to the software. To do this, you can open up an internet browser and enter the standard IP for your router. Look for a tab with name like, “Port Forwarding” or “Applications and Gaming”. Below is an example of Port Forwarding tab from a Linksys router.



In the "IP Address" field enter the IP address of your computer (Local IP). If your router asks you whether to ports for TCP or UDP select both. In the "Port" field enter the port number that you have created in the software. Some routers offer a from port number to port number, in this case enter the same number into both blanks.



Step 15: Connecting the WT-9001 Device to the Software

To setup a communication between the WT_9001 software and the WT-9001 unit, you need a GPRS enabled SIM card installed into the WT-9001 device and configure it as listed below:

1

Programming The Administrator Number

Text Command:

***TEL[N]#XXXXXXXXXX**

N stands for administrator number **1 - 20**

XXXXXXXXXX stands for the phone number you want to program as administrator.

Example:

To program phone number **1111222233** as administrator into list number **1**, you would send the following SMS command to the unit.

***TEL1#1111222233**

2

Programming The User ID

Text Command:

***USID#XXXX**

XXXX stands for 4 digits numeric numbers

Example:

To program User ID **1111** into the device, you would send the following SMS command to the unit.

***USID#1111**

3

Setup The GPRS CommunicationText Command:***GSIP#"TTT","XXX.XXX.XXX.XXX","NNNN"**TTT stands connection type "**TCP**" or "**UDP**"

XXX.XXX.XXX.XXX stands for External IP of your router

NNNN stands for Local Port number created from the WT_9001 Server Software

Example:

Assume that you have acquired the External IP address as **123.65.214.231**, port number **8765** and connection type: **TCP**, you would send the following SMS command to the unit.

***GSIP#"TCP","123.65.214.231","8765"**

4

Setup The APN Of Your SIM CardText Command:***ANET#XXXXX...**

XXXXX... stands for Access Point Name

Example:

To configure the access point name **Vodanet**, you would send the following SMS command to the unit.

***ANET#Vodanet**

5

Turn On GPRS Connection

Text Command:

***GPRS#X**

X stands for ON (1) or OFF (0)

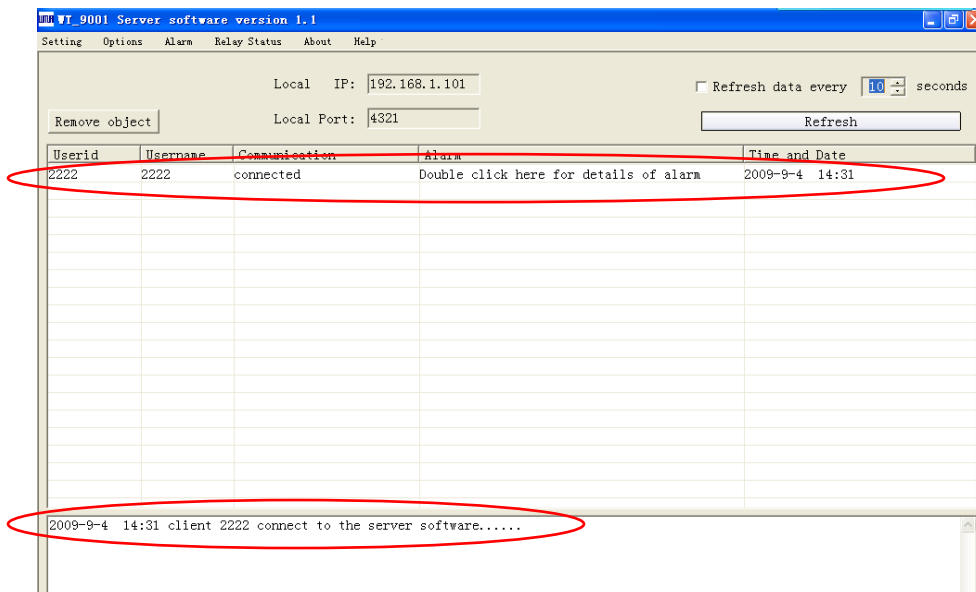
Example:

To turn on GPRS connection, you would send the following SMS command to the unit.

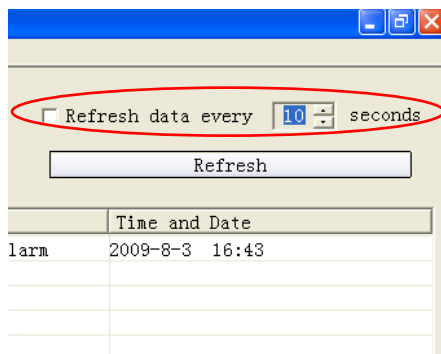
***GPRS#1**

Note: It is advised that you should program all other functions before enabling the GPRS connection.

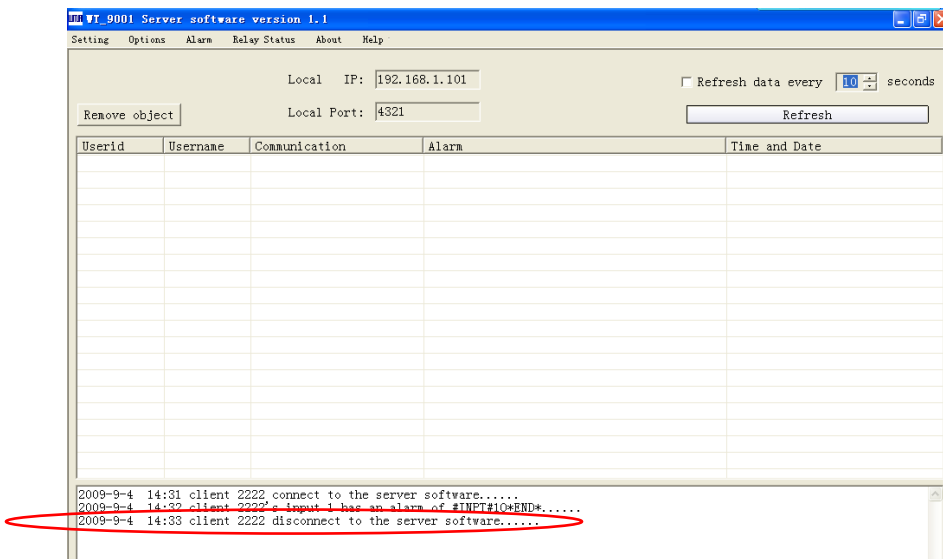
When the WT-9001 device connected to the WT_9001 Server software you shall see as below



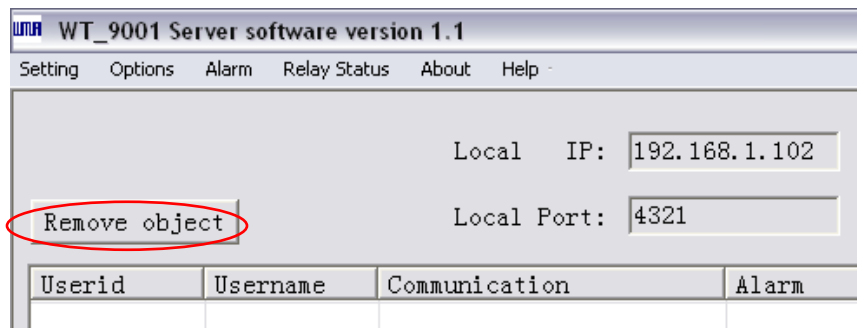
To enable the system to query the WT-9001 status every few seconds automatically you can choose to refresh data at a programmable time as shown below.



When the WT-9001 device disconnected from the WT_9001 Server software you shall see as below

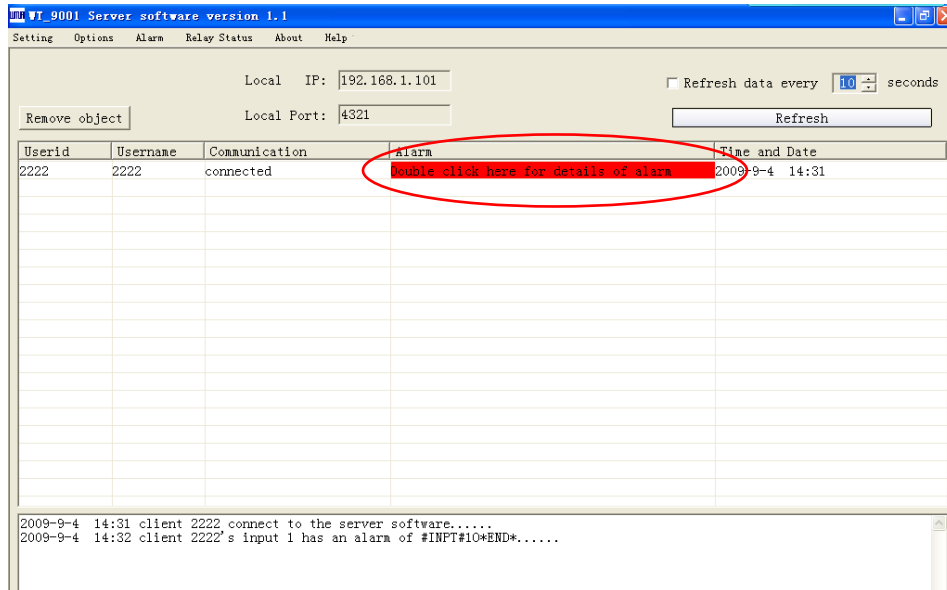


To manually remove the connected WT-9001 device from the software, you could press the "Remove object" button

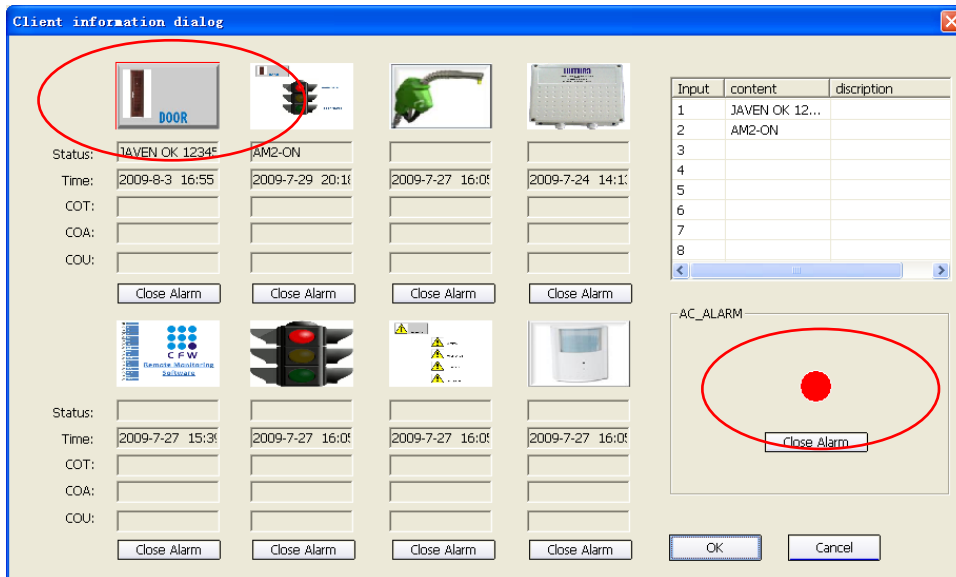


Step 16: Receiving an Alarm from the WT-9001 Device

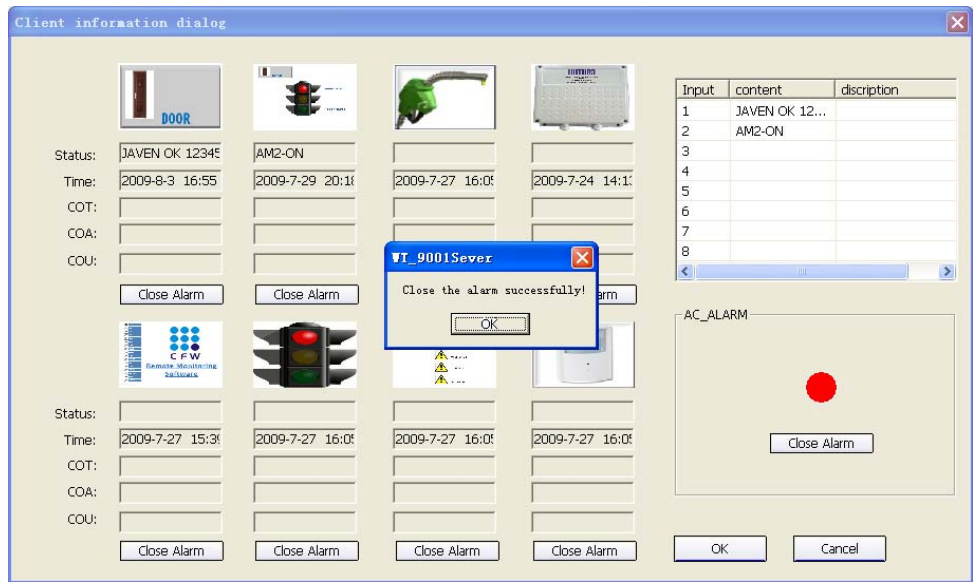
When there is an alarm event, a red indicator will appear at the Alarm tab of WT_9001 Server software as shown below.



Simply double click the red indicator for alarm details as shown below.

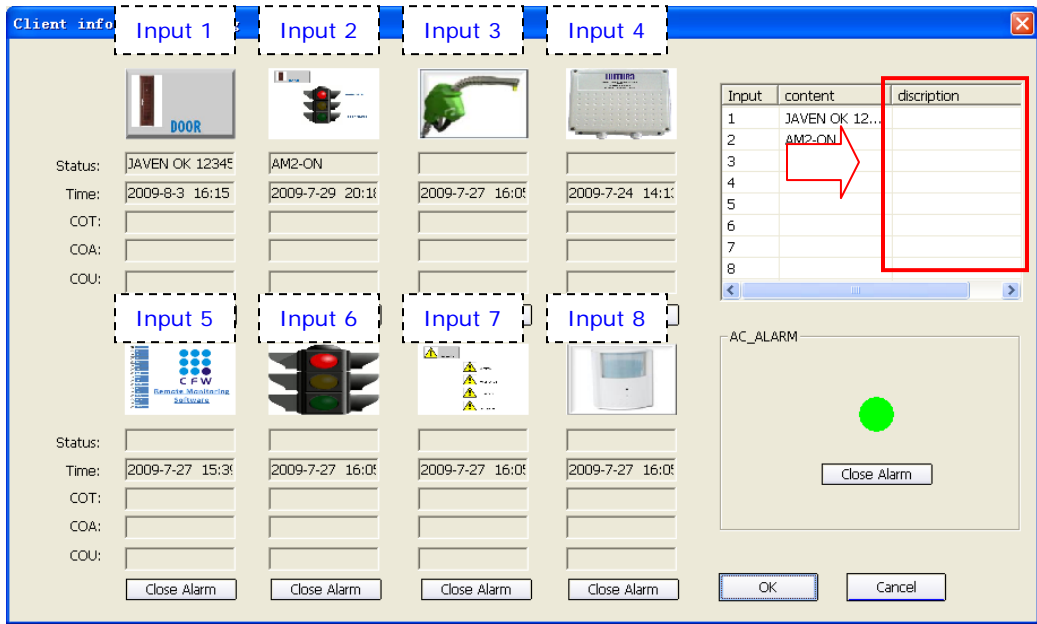


For the example above, Input 1 (magnetic door sensor) and power down alarm have triggered. The Door icon will blink continuously until it receives a confirmation by clicking Close Alarm button. The AC power down alarm icon turned to red when there is power failure, simply click the Close Alarm button to confirm the received alarm.

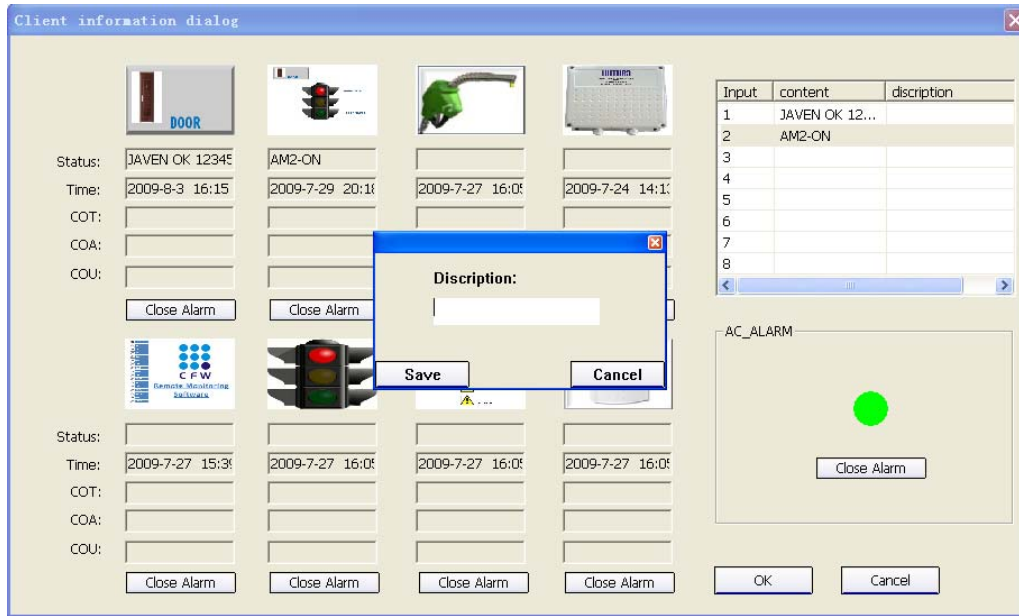


Step 17: Editing the Alarm Description and Picture Icons of Alarm Details

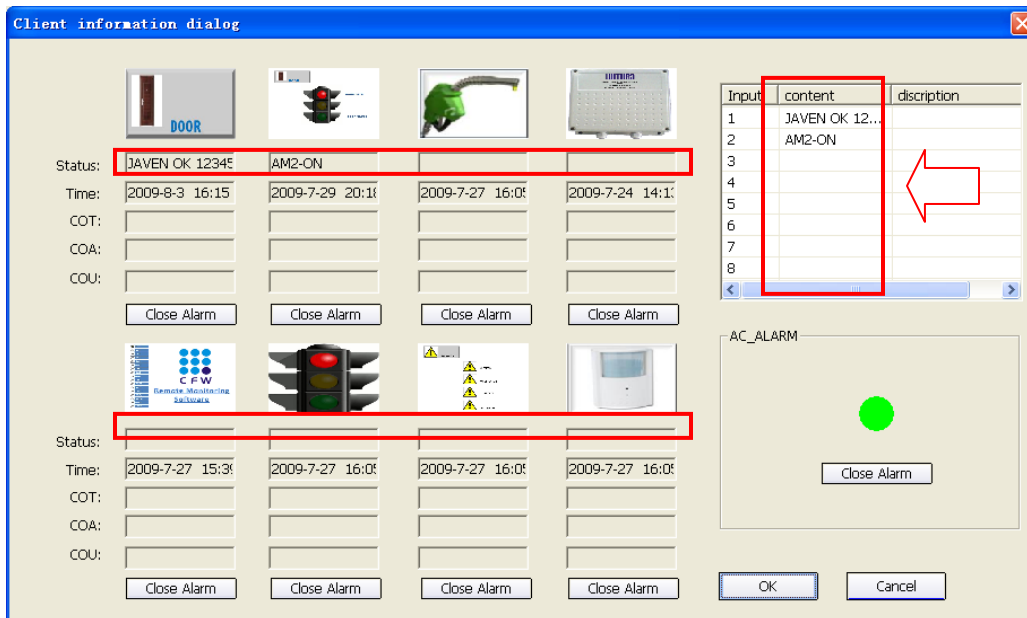
It is possible to change the alarm description and display icons according to your desire. To change the alarm description you can double click on the blank space below the description as shown below.



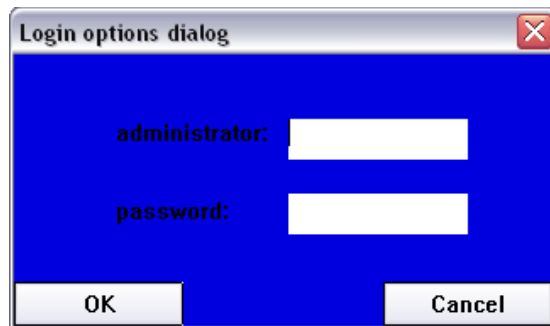
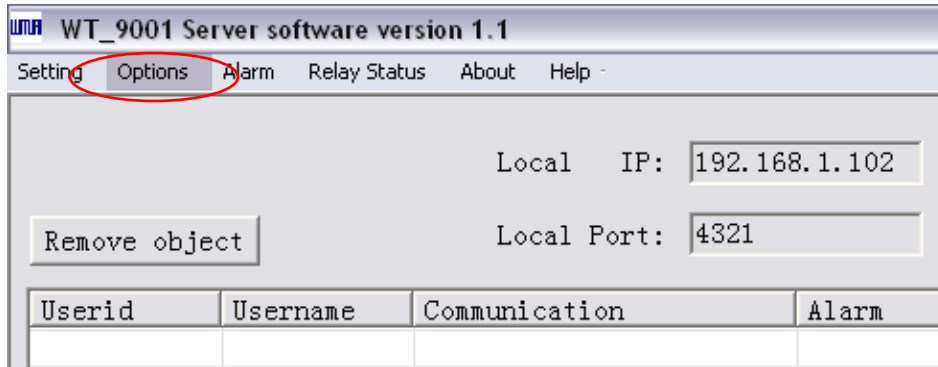
After entering the description click Save button to save alarm description



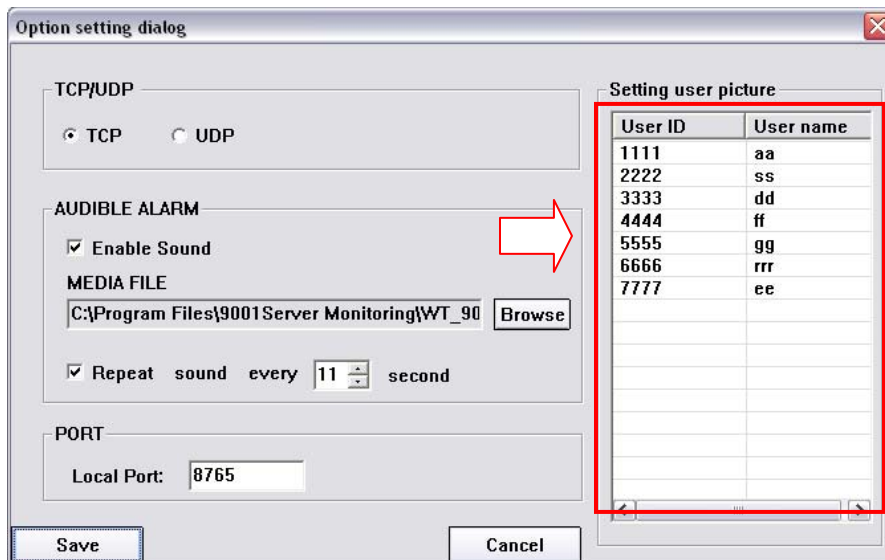
By default the system is able to read and displays the SMS alert content that has been programmed into the current device. You will find its SMS alert content as shown below.



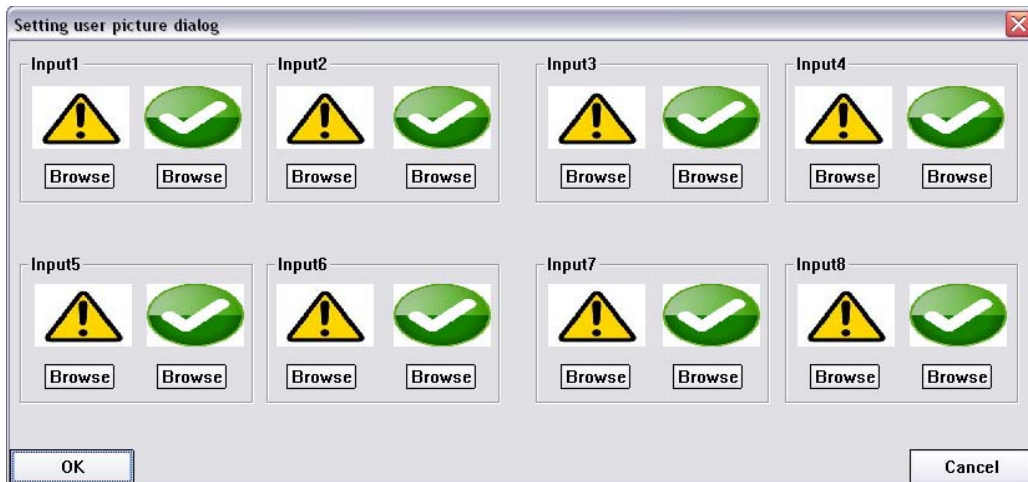
To change the display icons, you can start by pressing the "Options" menu. A smaller window will pop up as shown below.



Enter Administrator ID and Password. When WT_9001 Server software is launched for the first time, there is a default Administrator ID “witura” and its default Password is “12345”.

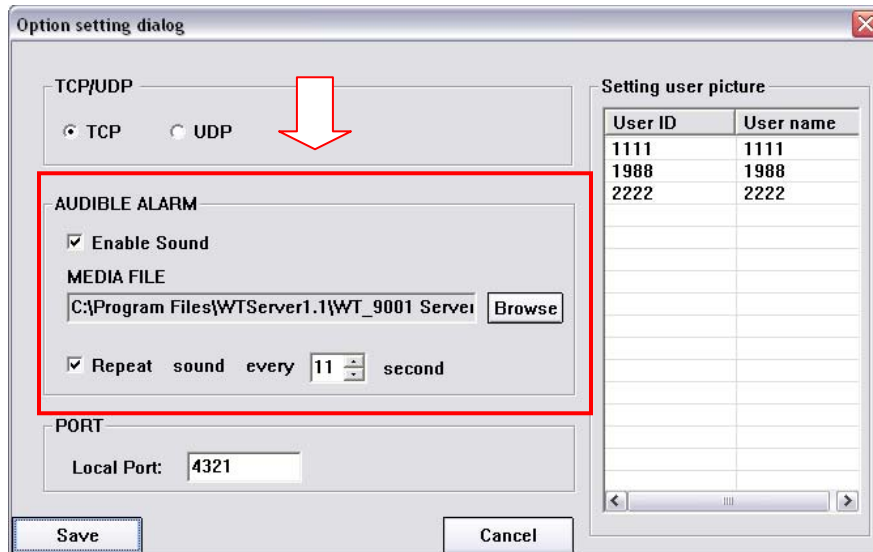


Simply click on one of the User ID and a smaller window will pop up as seen below.



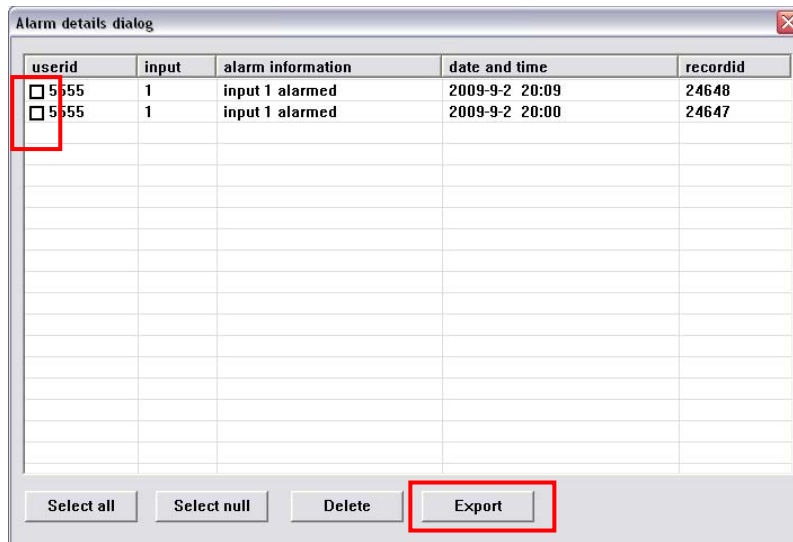
Please note that there are 2 icons for each input, the first display icon represents the input triggers at high pulse and the second display icon represents the input triggers at no pulse. After adding the display pictures simply press "OK" button to save.

You are also able to change the alarm sound by adding new media file. Audible alarm will sound when you received incoming alarm events from the WT-9001 devices.



Step 18: Checking the Alarm History Report

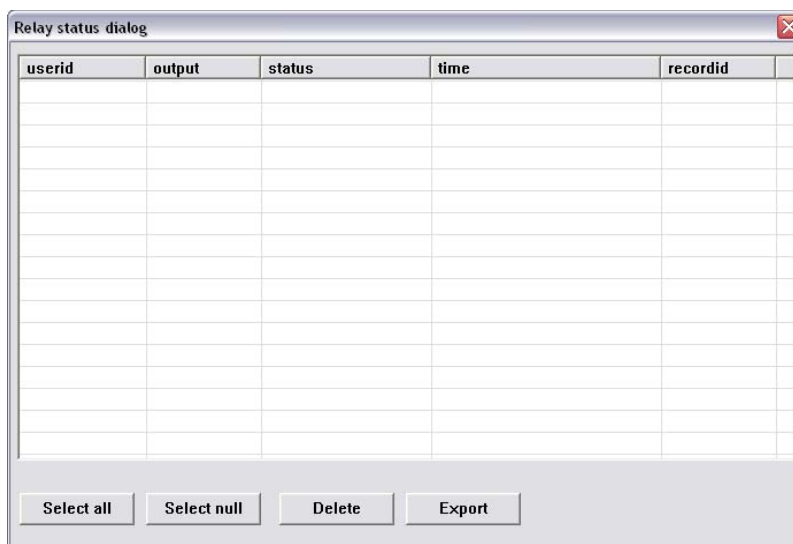
To check the Alarm History Report, simply press the "Alarm" menu.



To delete the alarms, you can manually select the alarms by ticking the check box or press the “Select all” button to select all the alarms and press the “Delete” button to delete. To export the alarms to Excel file simply press the “Export” button indicated above

Step 19: Checking the Output Relay Report

To check the Output Relay Report, simply press the “Relay Status” menu.



Step 20: Logout the System

To logout the system, simply click the X button on the top right.